



GONDĀN

SHIPBUILDERS

THE RIGHT WAY

A high-angle, wide shot of a ship's deck. A tall, white mast stands centrally, supported by stay lines. The deck is white with various equipment, including large black and grey winches, smaller grey cylindrical containers, and electrical boxes. The ship's hull is visible on the left and right sides. The background is a vast, dark blue ocean under a grey, overcast sky.

**STRENGTH
COMMITMENT
TRUST**

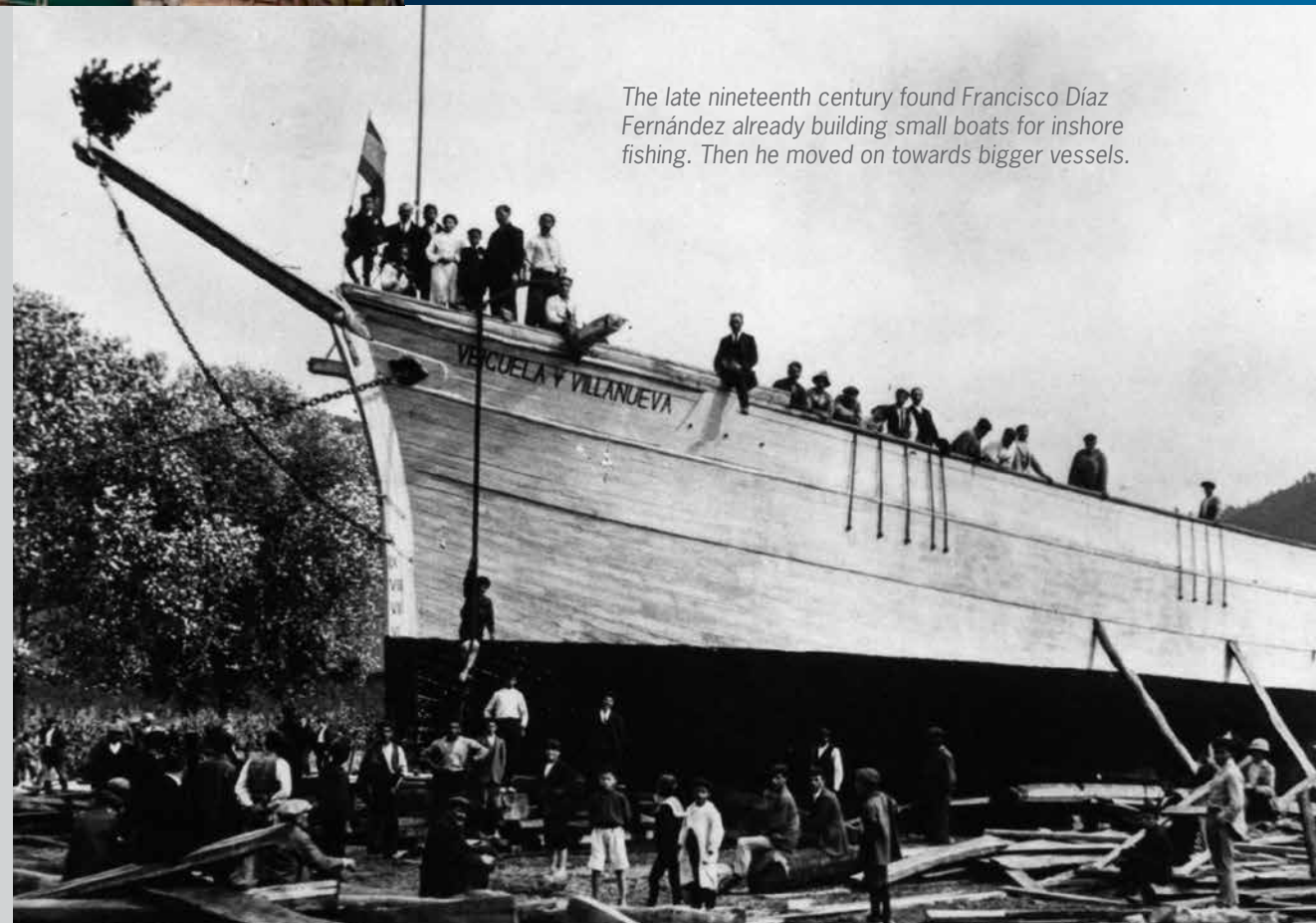


“We have earned the trust of our clients through years of successfully rising to challenges and offering direct, painstaking service.”

Álvaro Platero, CEO

For four generations, the family of the current president, Álvaro Platero Díaz, has dedicated themselves to shipbuilding.

Over its more than 90 years in business, GONDAN has built more than 300 vessels.



The late nineteenth century found Francisco Díaz Fernández already building small boats for inshore fishing. Then he moved on towards bigger vessels.



BUILDING SHIPS, OUR SOURCE OF PRIDE

Building vessels is a pride that has been forged since our beginnings, almost 100 years ago. We are a reference in tailor-made shipbuilding and have earned the trust of our customers.

That's why we know we're doing things the right way.

WHAT MAKES US DIFFERENT...



Capability

Experience, technology and reliability.



Commitment

Unconditional accountability.



Flexibility

We adapt to each client and each project.



Closeness


Availability, seamless communication and trust.



Organisation

Effective Planning:
Proactive Anticipation,
Systematic Processes,
Methods and Monitoring.



A close-up, low-angle shot of a ship's hull. The hull is painted a dark, textured blue-grey. Large, raised, metallic letters are affixed to the surface, spelling out "ASTILLEROS" in the upper half and "FISGUER" in the lower half. The letters are three-dimensional and have a brushed metal finish. The background is a bright, warm yellow, suggesting a sunny day or a bright light source. The overall composition is dynamic, with the hull curving upwards and to the right.

When a vessel leaves our factory, she takes a little bit of ourselves with her. The enthusiasm, the care and the coordinated effort of the whole team is present in every weld, every circuit, every finish.

OUR VESSELS

We are specialists in building all kinds of complex vessels, no matter what their function. At GONDAN we respond to those especially demanding sectors that require technological solutions to complex problems.



PASSENGER
VESSELS



OFFSHORE
ENERGY



FISHING &
AQUACULTURE



RESEARCH
& TRAINING



HOMELAND
SECURITY



TOWAGE




CUSTOM PROJECTS

All orders are tailor-made, unique and personalized. The adaptation to each particular vessel's circumstances and to the technical and quality requirements requested by each client is evident in all development phases, from design to production, making each boat singularly one-of-a-kind.

This customization means total flexibility in the production process; we adapt to the shipowner's requisites and promptly and skillfully adjust planning to suit the changing needs of the project.





A large industrial crane is lifting a heavy, rectangular steel component, likely a ship's hull section, from the ground. The crane's lattice structure is prominent against a blue sky with wispy clouds. In the background, other industrial structures and a body of water are visible. The overall scene conveys a sense of heavy industrial work and engineering.

We never stop investing in our facilities, modernizing and improving them in order to continue strengthening our steel processing capacity, which today reaches 3,600 t/year.

TOUGH, LONG-LASTING RELIABILITY

We have been constructing steel vessels for over 50 years. Quality and precision-built by true steel craftsmen, hulls made of this resistant material protect ships against the pounding of the sea and the passage of time.

STEEL DIVISION



A woman worker in a blue jacket, cap, and mask is marking a fiberglass sheet with a red marker. The background shows stacks of fiberglass sheets and rolls of material.

LIGHT AND VERSATILE

The Fiberglass (GRP) Division responds to the market's interest in a system that allows great flexibility and has great advantages in terms of cost and agility of production.

It focuses its activity on the construction of workboats made of resins and fibre by means of composite transformation processes.

FIBERGLASS DIVISION





Spatial distribution, incorporation of different technologies, functional improvements, software, manufacturing systems... All these aspects are developed and coordinated to perfection to create boats that exceed the expectations of our customers.

Mechanics, electronics, design... from engineering drawings to the outfitting stage... on the outside and inside... the pieces of the puzzle perfectly fit together.



INTEGRATION OF TECHNOLOGIES



DESIGN AND PRODUCTION

Projects culminate in real vessels through custom designing, technological integration and smart manufacturing methodology to optimize production capacity.



Surface preparation in a controlled atmosphere.

TECHNICAL OFFICE

A differential aspect in design and production is project planning. All tasks (synchronising the arrival of equipment, analysis of technical documentation, execution of plans, installation...) are carried out in a coordinated and efficient manner, taking into account the uniqueness of each vessel and the specific characteristics of each project.



INNOVATION

Our innovative spirit, added to our company's proven track record over almost 100 years, has set us apart from the rest and made us able to integrate pioneering technological solutions.

2nd DECK

2700 mm

8 SCIENTISTS
& CREW

1st DECK

2700 mm

4 CREW

POS.	QUAN.	NAME
01	1	GENERAL PURPOSE WINCH
02	1	CTD/LADCP/TSS SONAR
03	1	MOORING WINCH
04	1	BENTHOS SUCRO
05	1	MULTIPURPOSE
06	1	VIDEO CRAB WINCH
07	1	TRAWL WINCH
20	2	PELAGIC NET CRUISE
21	1	BOTTOM TRAWL SPOT NET
22	1	
23		
24	1	CRUISE WINCH

The technical department is responsible, among others, for the following tasks: weight control during the construction period, stability calculations, launching conditions and approval of plans by the classification society and flag authorities.

DUX/PAX/AUDAX

First dual-fuel Tugs built in Europe.

EDDA PASSAT

First Service Operation Vessel built in Spain.

EDDA FERD

First vessel equipped with Blue Drive PlusC technology.

EDDA FRAM

First PSV with Voith thrusters integrated into the DP system.

First vessel equipped with oilfield sludge removal system.

First vessel with Rim Drive technology.

SUNDERØY

First vessel with AC motors, high ice resistance, regenerative power and floating frequency (50-60 Hz) system.

We hold ourselves accountable to our customers and meet their expectations, while always assuming our unconditional responsibility to our employees, the environment and the social and economic development of the region.

Quality

Continuous improvement in materials, processes, technology and service.

Health and Safety

Our professional team is the fundamental value of GONDAN. The definition of protocols, safety standards and processes are based on them.

Sustainable development

We contribute to the preservation of our social, cultural, natural and economic environment.

A background image showing three construction workers in blue GONDAN uniforms and hard hats working on a large metal structure. The worker on the left is using a tool, the middle worker is looking to the side, and the worker on the right is partially visible. The word "COMMITMENT" is overlaid in large white letters at the bottom.

COMMITMENT



METHOD, PROCESS, TECHNOLOGY

We have implemented a system of continuous improvement that applies to the selection and treatment of materials, work procedures and the incorporation and integration of technology.



SERVICE

We are especially valued for the quality of our service: planning and commitment, which makes us efficient; transparency, which makes us reliable; and, above all, direct, friendly and close attention and care, which makes us a trusted partner.



Achieving efficient production, saving energy, minimising emissions and controlling waste requires technical, material and human resources, strict working protocols, investment in training and strict supervision and inspection. In addition, we apply clean practices, such as supplying almost all of our electricity consumption from renewable energy sources.





COMMITMENT
TO THE

ENVIRONMENT

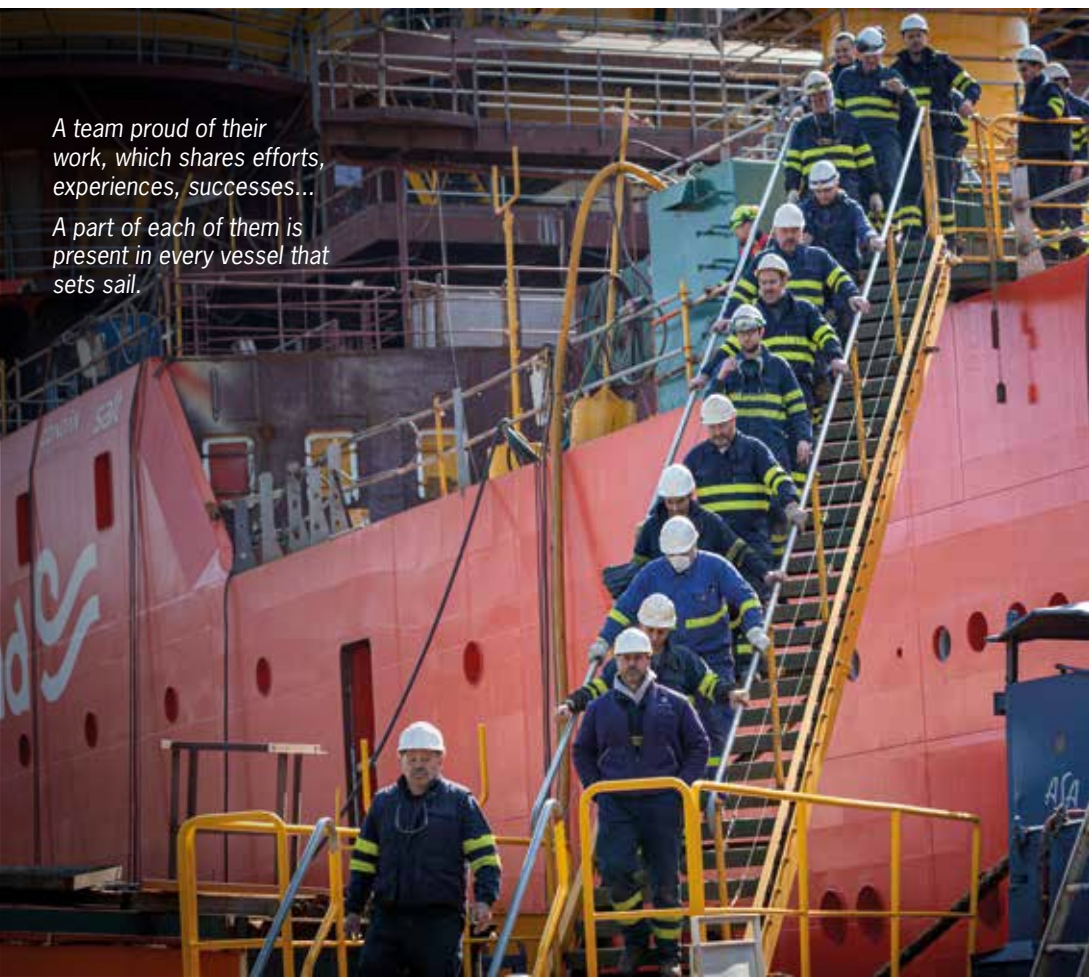
A GREAT TEAM

A young but experienced staff, continuous training, low turnover and high commitment. They are the main value of the shipyard. That is why we strive to ensure that they work in the best conditions and with the greatest safety.



*Master and apprentices:
nurturing the
growth and renewal
of a family legacy*





A team proud of their work, which shares efforts, experiences, successes...

A part of each of them is present in every vessel that sets sail.



When a vessel leaves the yard, everybody feels it as an achievement shared with the rest of the whole team...

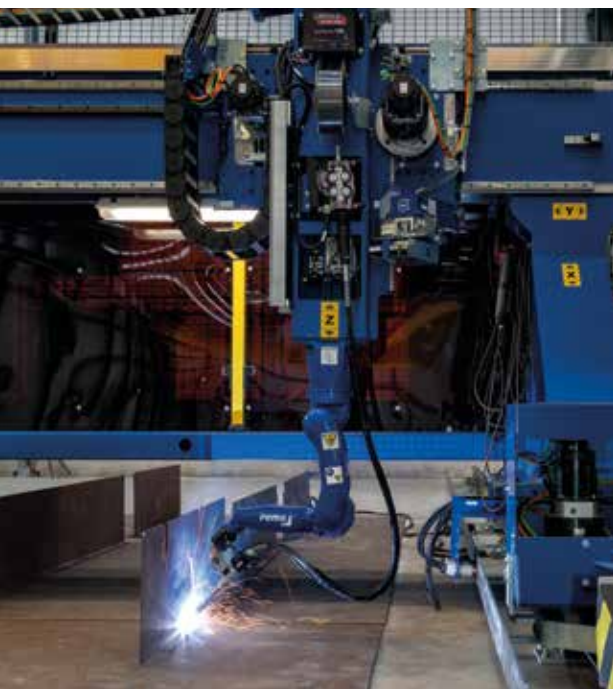




Three facilities: the main headquarters; cutting, bending and warehouses; and the GRP Division. 55,000 m² within a beautiful natural setting.



Puerto de Figueras
33794 Castropol · Asturias, SPAIN
43° 32' 18" N, - 7° 1' 24" W



FACILITIES

Main Facilities, Figueras

Total area: 32,500 m²

Covered area: 10,000 m²

Length of outfitting quay: 190 m

Cranes capacities:

1 x 50 t @ 25 m y 25 t @ 50 m

1 x 40 t @ 32 m y 25 t @ 50 m

1 x 60 t @ 32 m y 40 t @ 50 m

Slipway for building vessels 1: 115 m x 20.5 m

Slipway for building vessels 2: 115 m x 24 m

Cutting, Bending and Warehouses. Barres

Steel warehouse

Steel-cutting workshop

Profile warehouse

Profile cutting and bending workshop

Equipment warehouse

Outfitting materials warehouse

Robotised welding

GRP Division Facilities, Castropol

Total area: 8,000 m²

Covered area: 5,000 m²

Height: 14.5 m

Vessels up to 40 m length

Controlled atmosphere: regulated temperature and humidity

GONDAN IN FIGURES

More than **300** vessels built since **1925**

Facilities total area (approx): **55,000 m²**

Over **90%** of production focused on international markets

3,600 t of processed steel/year

600 direct and subcontracts **employees**

Financial and Economic soundness

with international first-class bank guarantees

DNV Certifications:

ISO 9001:2015

ISO 14001:2015

ISO 45001: 2018



Puerto de Figueras
33794 Castropol · Asturias, SPAIN

43° 32' 18" N, - 7° 1' 24" W

📞 +34 985 636 250
gondan@gondan.com

www.gondan.com